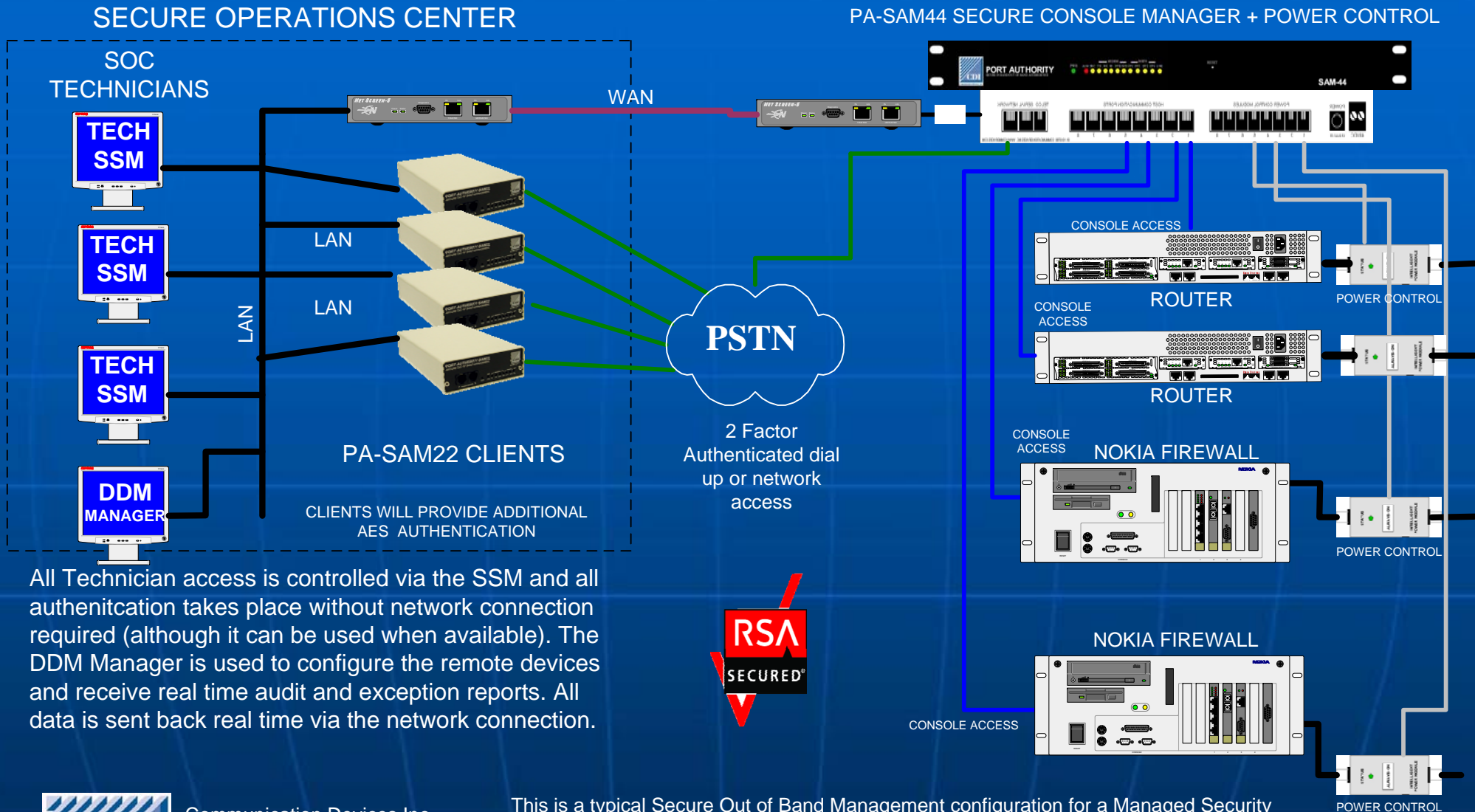


SECURE RSA-AES OUT OF BAND MANAGEMENT OVER DIAL-UP OR NETWORK



All Technician access is controlled via the SSM and all authentication takes place without network connection required (although it can be used when available). The DDM Manager is used to configure the remote devices and receive real time audit and exception reports. All data is sent back real time via the network connection.



Communication Devices Inc.
 85 Fulton Street
 Boonton, NJ 07005
 +1 973 334-1980
www.outofbandmanagement.com

This is a typical Secure Out of Band Management configuration for a Managed Security Provider. The PA-SAM44 is connected to the console port of a Routers . A WAN connection also attaches the PA-SAM44 to the remote WAN. In the event of a problem, the SOC technician can RSA-AES dial-up to the PA-SAM44. This will then allow console access . The tech can also NETWORK connect to the remote LAN . At no time is the PA-SAM22 relying on network security to operate as the network is in question when the device is used. The PA-SAM44 will periodically check the telco line and report status back to the DDM.